

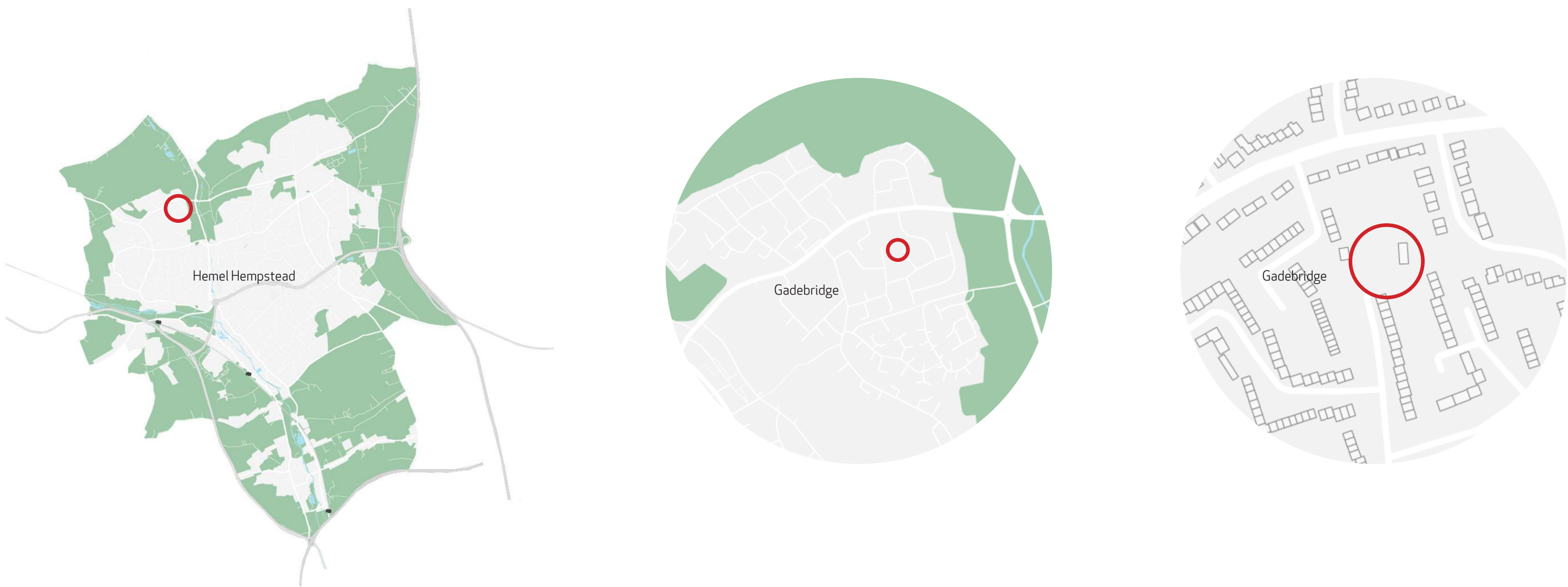
# Long Arrotts, Gadebridge

Public Consultation: 4th September 2018



The proposal is for 2 new two bedroom houses and 6 two bedroom flats for affordable rent and to be managed by Watford Community Housing

Site Location



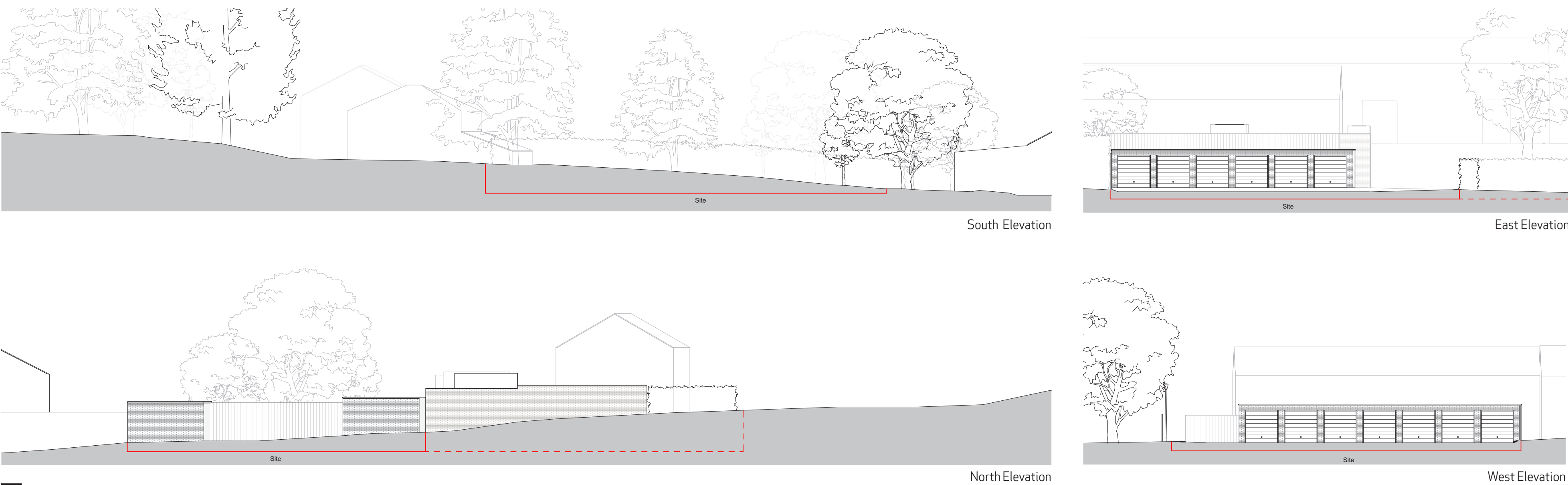
Existing Site Plan



Proposed Site Plan



Existing Elevations





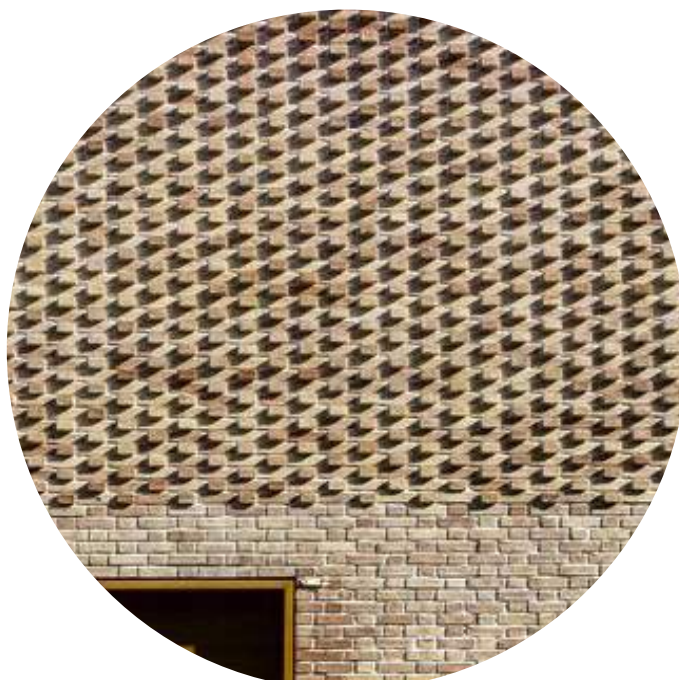
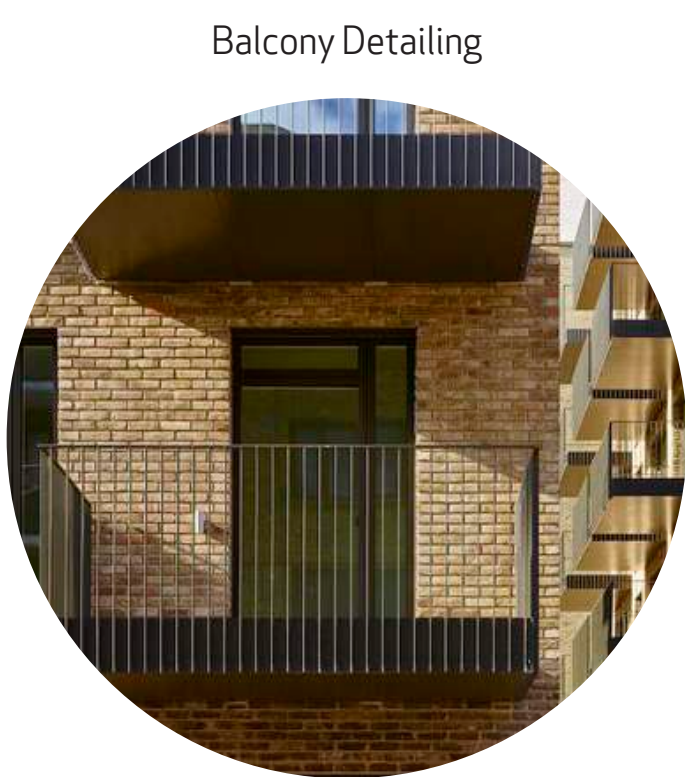
# Long Arrotts, Gadebridge

Public Consultation: 4th September 2018

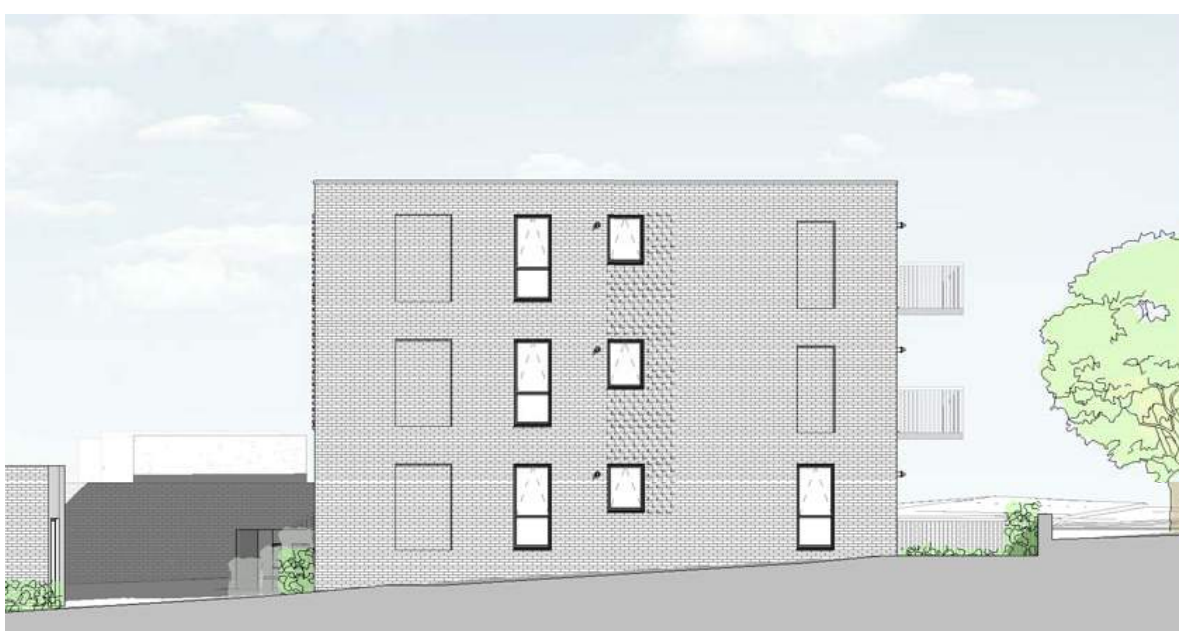


The proposal is for 2 new two bedroom houses and 6 two bedroom flats for affordable rent and to be managed by Watford Community Housing

## Illustrative Perspective Sketch // Proposed Flats



## Proposed Elevations





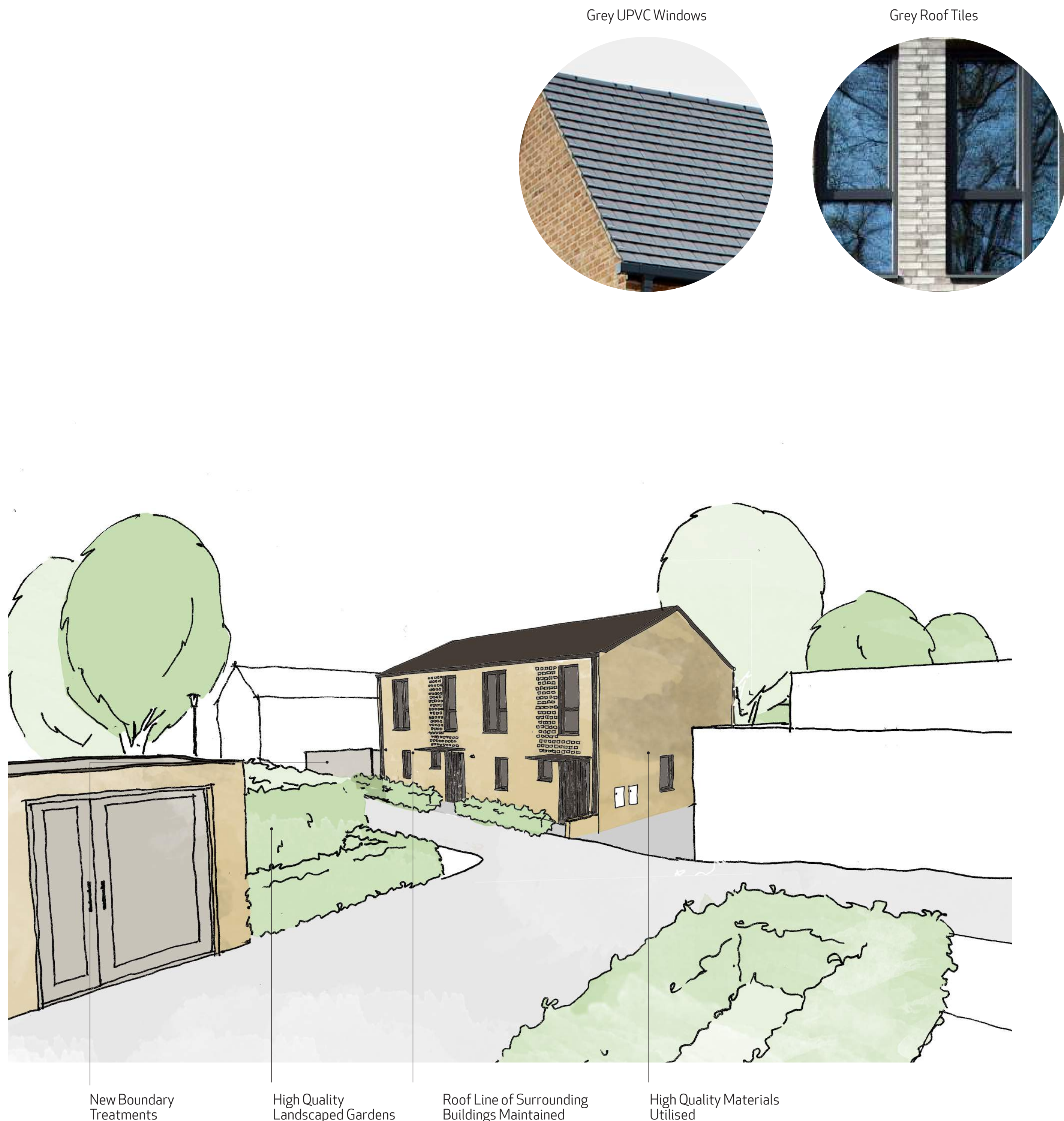
# Long Arrotts, Gadebridge

Public Consultation: 4th September 2018



The proposal is for 2 new two bedroom houses and 6 two bedroom flats for affordable rent and to be managed by Watford Community Housing

Illustrative Perspective Sketch // Proposed Houses



Proposed Elevations





# Long Arrotts, Gadebridge

Public Consultation: 4th September 2018

The proposal is for 2 new two bedroom houses and 6 two bedroom flats for affordable rent and to be managed by Watford Community Housing



Proposed Site Plan



Visualisations

